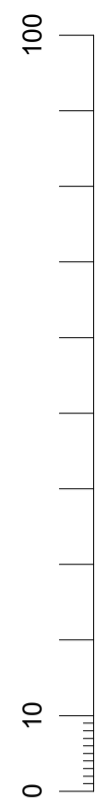
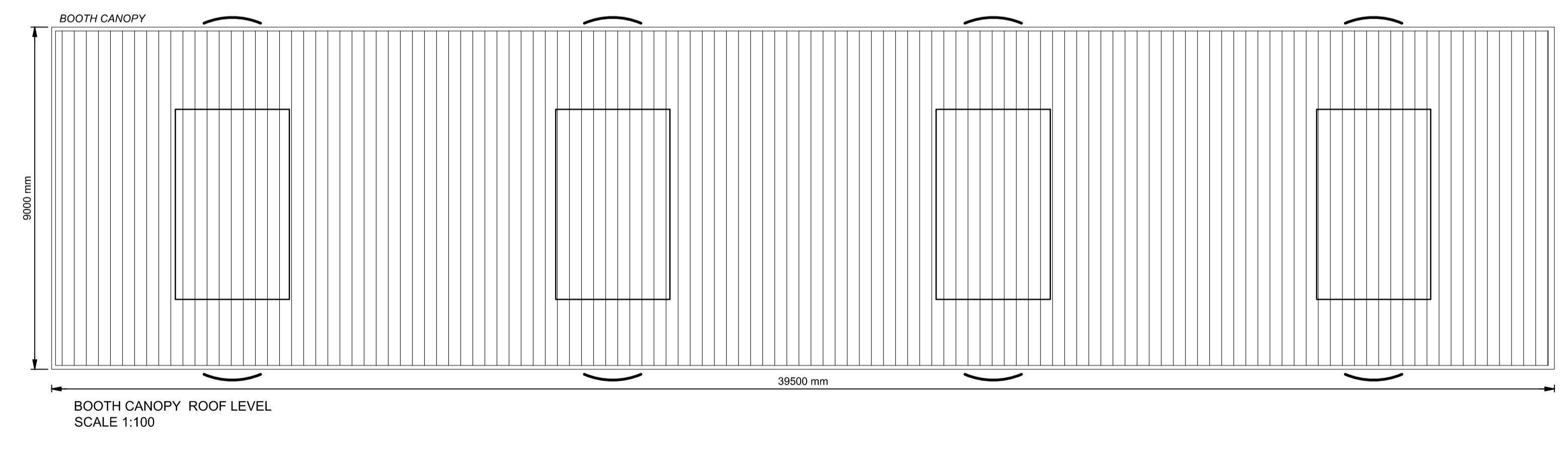
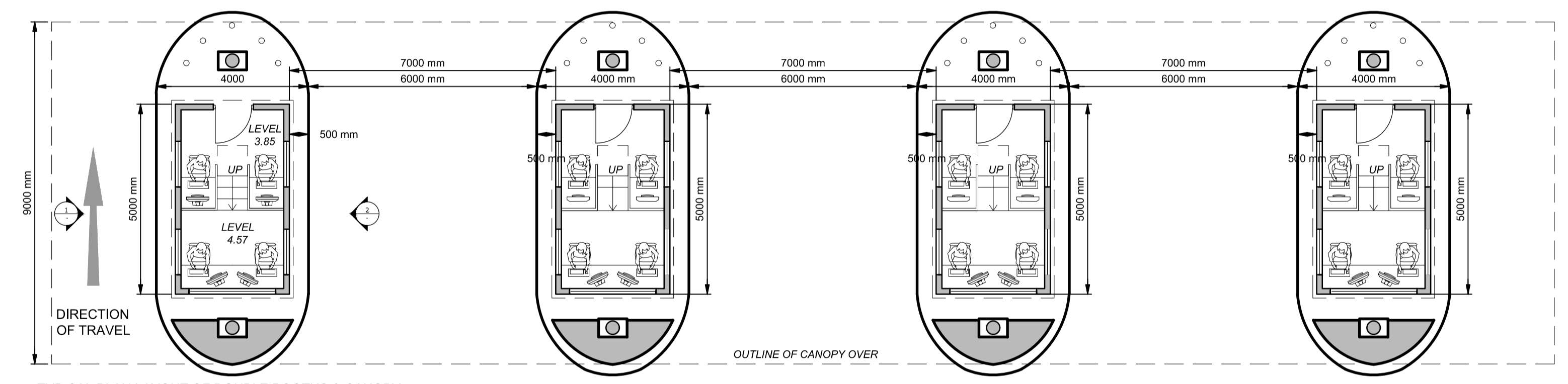
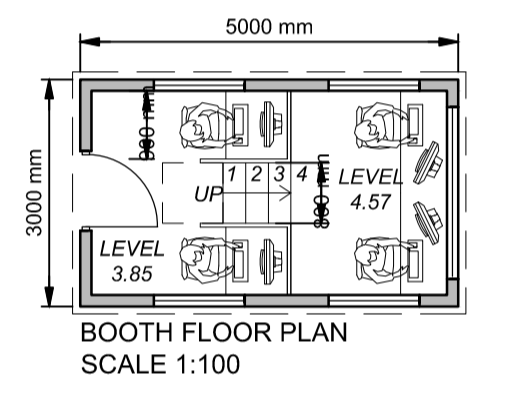
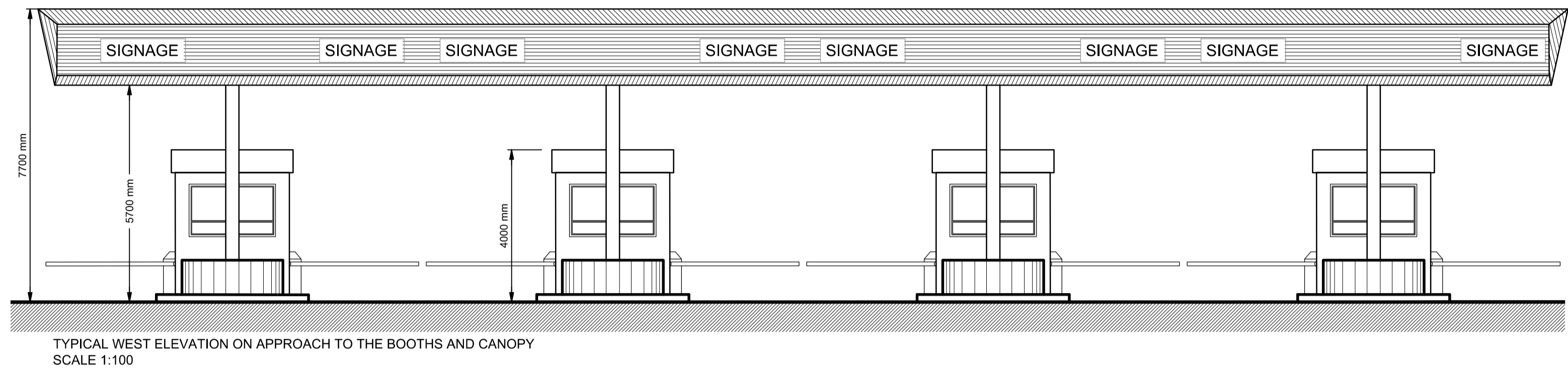
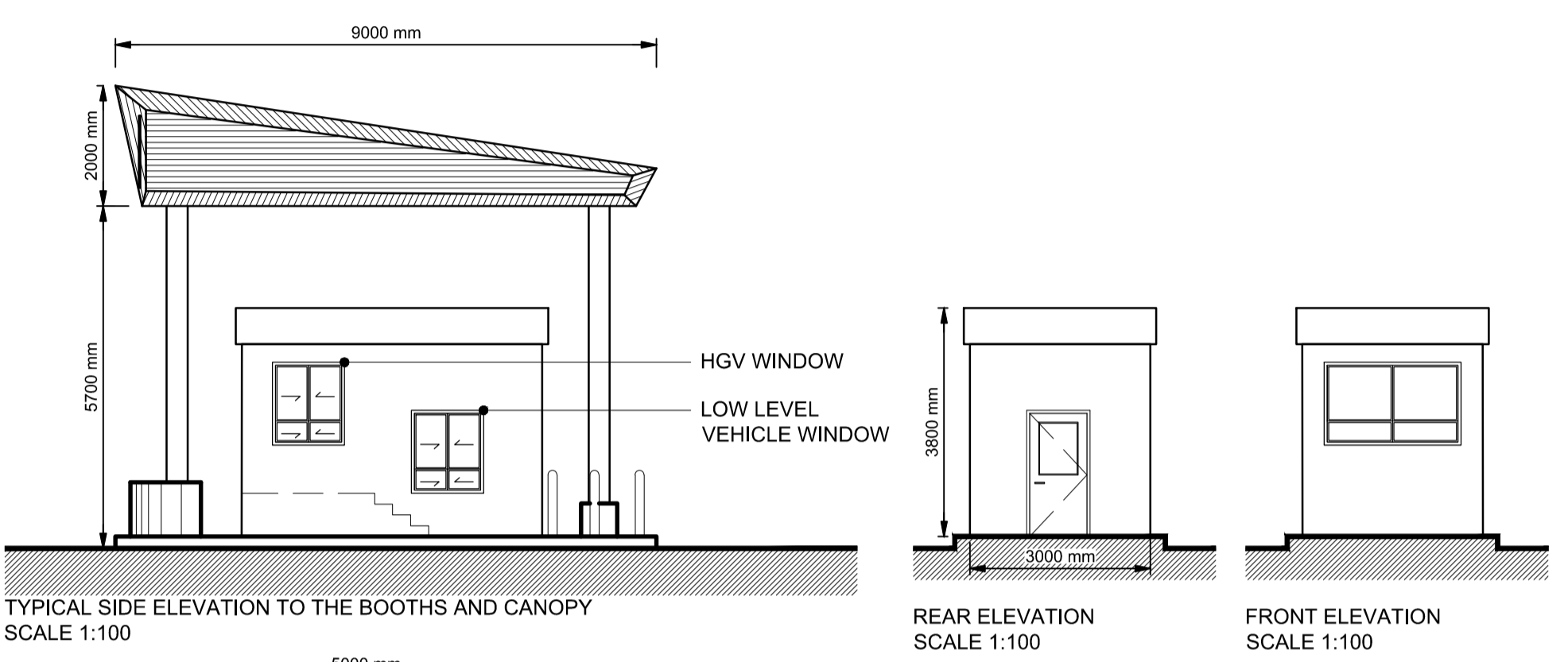
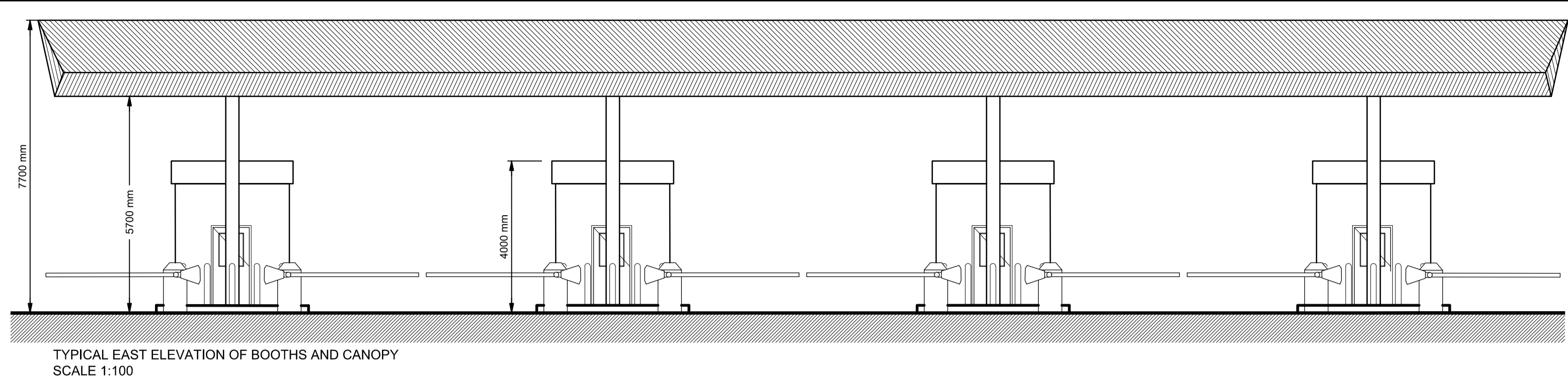
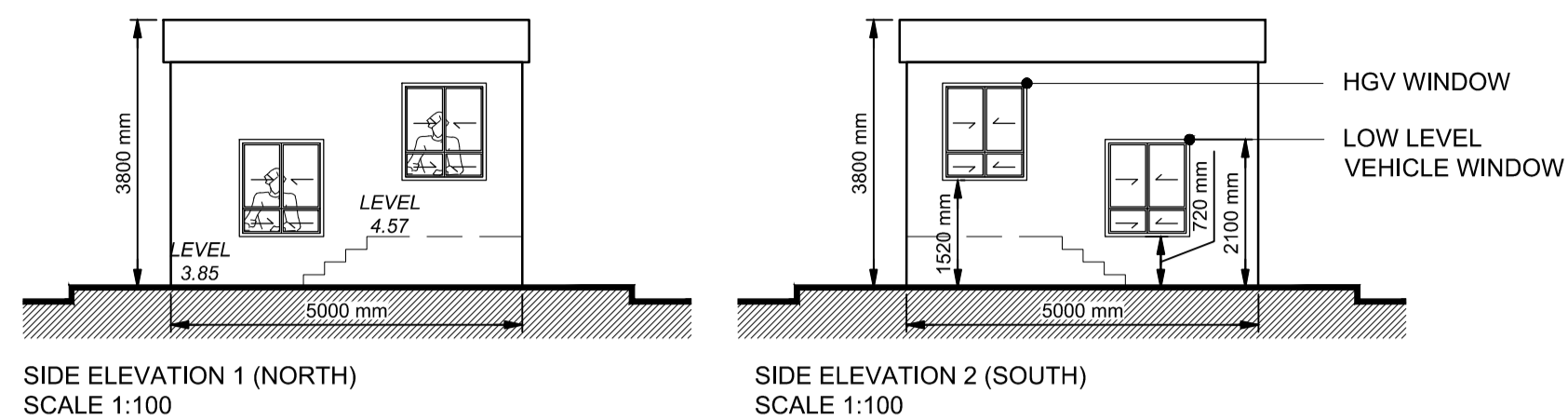


DO NOT SCALE

A1



- GENERAL NOTES**
- ALL DIMENSIONS ARE IN METRES UNLESS NOTED OTHERWISE
 - ONLY WRITTEN DIMENSIONS SHALL BE USED. NO DIMENSIONS SHALL BE SCALED FROM THE DRAWINGS
 - ALL LEVELS ARE IN METRES AND ARE TO ORDNANCE DATUM MALIN UNLESS NOTED OTHERWISE
 - ALL COORDINATES ARE IN METRES AND ARE TO IRISH TRANSVERSE MERCATOR
 - DRAWINGS ARE TO BE READ IN CONJUNCTION WITH THE SPECIFICATION
 - ALL DRAWINGS ARE THE PROPERTY OF ATKINS BYRNELOOBY.
 - [xx.xx m CD] REFER TO LEVELS AT CHART DATUM (DUBLIN PORT)
 - ORDNANCE DATUM MALIN [O.D.M.]
- CHART DATUM [C.D.] (DUBLIN PORT) 2.51m
- OS MAP SHEET NO:
3198-18, 3198-19, 3198-20, 3198-23, 3198-24, 3198-25, 3199-16, 3199-17, 3199-18, 3199-23, 3199-24, 3264-2, 3264-3, 3264-4, 3264-5, 3264-8, 3264-9, 3264-10, 3264-13, 3264-14, 3264-15, 3265-1, 3265-6, 3265-7, 3265-8, 3265-9, 3265-11, 3265-12.



- FINISHES**
- CANOPY - POLYESTER POWDER COATED PROFILED STEEL CLADDING
 - BOOTHS - POLYESTER POWDER COATED SMOOTH STEEL CLADDING
 - DOORS & WINDOWS - DOUBLE GLAZED ALUMINIUM
 - COLUMNS - GALVANISED STEEL

ATKINS PROJECT No. : 5163122
Ordnance Survey Ireland Licence No. AR0082519
© Ordnance Survey Ireland/Government of Ireland

File: CP1770-ATK-01-ZZ-M2-CE-0062.dwg
Date: Jul 05, 2019 - 3:21pm
Plotted by: ENicMhurchu

Rev	Description	By	Date	Chk'd	Auth
00	ISSUED FOR PLANNING	MOD	07.19	KH	AC

ATKINS
Member of the SNC-Lavalin Group

BYRNELOOBY
WS Atkins Ireland Ltd. & ByrneLooby Partners Ltd.
Atkins House,
150 Airstide Business Park,
Swords, Co. Dublin

Client
**COMHLACHT CHALAFOR
ÁTHA CLIATH
DUBLIN PORT COMPANY**

Project
MP2

Purpose PLANNING	
Title TYPICAL BOOTH DETAILS AT CAR/HGV CHECK IN	
Original Scale As Shown @ A1	Design/Drawn MOD Date 05.07.19
Checked KH Date 05.07.19	Authorised AC Date 05.07.19
Status P	Drawing Number CP1770-ATK-01-ZZ-M2-CE-0062
Rev 00	